



SP611

Sport GPS Receiver User manual



Introduction

Table of Contents	i
Announcement	ii
Warnings	iii
Caution	iv
Welcome to Navibe	v
General Information	vi-vii

Reference

Hardware Description	01
Button Description Table	02-04
LCD Screen Words & Icons Definition	05
Operation Flow	06
Getting Started	07
Bracket Mounting Instruction	08-10
Pin Assignment	11
USB GPS Receiver	12

Introduction

Compass Systems Corp.
Email: service@cpss.com.tw

No part of this User's Manual may be reproduced or transmitted in any form or by any means, electronic or mechanical, including photocopying recording ,for any purpose other than the purchaser's personal use, without the written permission of Compass Systems Corp.

Information in this User's Manual is subject to change without notice. Compass Systems Corp. reserves the right to change or improve or modify its products and to make changes to the content without obligation to notify any person or organization of such changes.

©Copy right 2005 by Compass Systems Corp. All rights reserved.

April 2005
Printed in Taiwan

Introduction

WARNINGS

Some certain knowledge is required to be well known by the user for proper and safe use of Navibe Sport GPS receiver. Please read this User's Manual first before operation.

Because Navibe Sport GPS receiver is an assistant device, it will NOT undertake any legal responsibility for any accident or damage caused by the user's wrong operation and/or wrong judgement in navigating with Navibe Sport GPS receiver.

Introduction

CAUTION

The Global Positioning System(GPS) is a system of 24 satellites which circle the earth twice a day in a very precise orbit and transmit information to earth. The Navibe Sport GPS receiver must continuously find at least three of these satellites to calculate your position and your movement.

This GPS system is operated by the government of the United States, which is solely responsible for its accuracy and maintenance. Any changes of the system could affect the accuracy and performance of all GPS equipment.

The Navibe Sport GPS receiver is designed for recreational use only. Please do not use this product for obtaining measurements in industrial or professional fields.

Introduction

Thank you for choosing Navibe Sport GPS receiver!

Take it now --- it can be your best friend!

Application Conditions:

Navibe Sport GPS receiver is not designed for indoors or under water usage. It uses Global Positioning System (GPS) satellites to calculate distances, current/maximum/average speed. Navibe Sport GPS receiver is intended for outdoors sport application usage in the temperature range of -10°C~ 60°C. For best performance, please use Navibe Sport GPS receiver outdoors with an unobstructed view of sky.

Introduction section gives you a general overview of Navibe Sport GPS receiver features.

Reference section tells how to operate the unit outdoor for sport activities and how to use it as a normal USB GPS receiver inside the car for car navigation applications with this unit specifically in more details.

If you find something missing or damaged with this unit to the standard package, please contact the local dealer or retailer.



Introduction

General Information

1. Package list

Thank you for purchasing the SP611. Please make sure the SP611 Navibe Sport GPS Receiver package contain the following items:

- Navibe Sport GPS receiver
- Armband
- User manual
- Three brackets

If any of the items are missing, please contact the local dealer or retailer.

2. Maintenance

- Please don't try to dismantle the Navibe Sport GPS receiver. There are no user serviceable components in this product.
- Store the Navibe Sport GPS receiver away from direct sunlight or extreme heat.
- Remove battery before storing for an extended period.

Introduction

3. Sprinkling water resistance

The Navibe Sport GPS Receiver is sprinkling water resistant.

4. Changing the battery

Please always shut down the Navibe Sport GPS receiver before changing the battery.

The instruction of changing the battery is shown below:



Reference

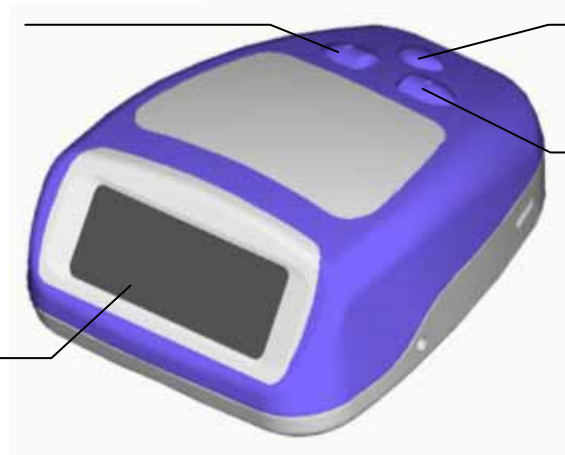
Hardware Description

Button 2
LCD Backlight

Button 1
Power

Button 3
Mode/Reset

LCD Screen



Button Description Table

The Sport GPS has three Buttons. The first is power Button that is named Button1. The second is LCD Backlight on/off Button that is named Button 2. The third is Mode/Reset Button that is named Button 3. The function table of Button is shown as follows:

Button 1

Action	Description
Power On	Hold the button for about 1 second to switch the device on
Power Off	Hold the button for about 1 second to switch the device off.

Reference

Button2

Action	Description
LCD Backlight ON	Press < 1 second, then LCD back light stays on for 5 seconds. Press till the light is ON, then LCD back light stays on permanently.
LCD Backlight OFF	Press button again > 2 seconds, then LCD back light OFF.

Button3

Action	Description
Mode	press < 1 second: switch between MAX and AVG speed.
Reset	press > 2 seconds: reset the distance, MAX and AVG speed.

Reference

Button2 & Button3

Action	Description
Press Button2 and Button3 together	Press 2nd and 3rd Buttons together for minimum 3 seconds., then it changes between MILE MPH to KM KM/H, default setting is KM KM/H.

Reference

LCD Screen Words & Icon Definition

GPS – to indicate GPS status

MAX – For MAX speed


AVG – For average speed

MPH – Mile per hour

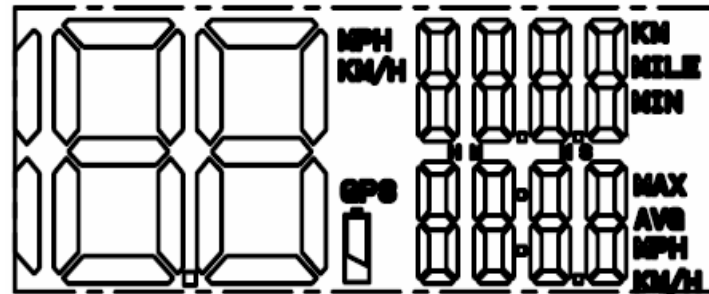
KM/H – Kilometer per hour

KM – Kilometer for distance

MILE – Mile for distance

Battery Icon  – To warn low battery status

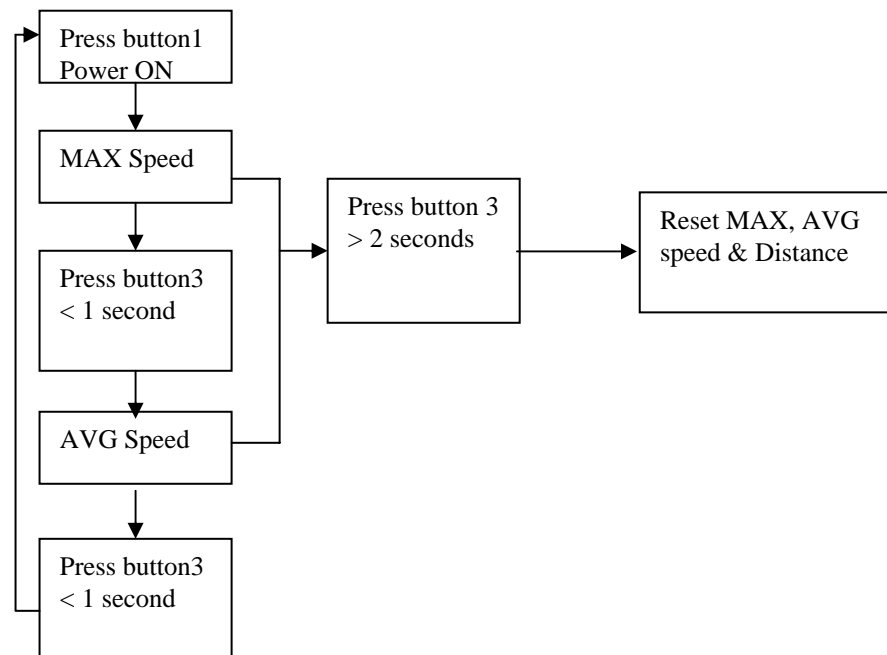
Distance Digit / Speed Digit – To show the values of distance and speed. The decimal accuracy will be adjusted automatically



Reference

Operation Flow

(Once power is ON, MAX speed will be shown)



Reference

Getting started

1. Depending on your sport activities, fit or mount the Navibe Sport GPS receiver around the upper arm, on the belt or on the bike.
2. Press the **Button 1** to turn on the power and start the operation. First start may take up to 60 seconds to acquire all the satellite data.
3. Once GPS is 3D locked, the LCD screen of Navibe Sport GPS receiver will display the distance (KM), current speed (KM/H) and maximum speed (KM/H).
4. Press the **Button 3** less than one second, you can switch between maximum and average speed.
5. Press the **Button 3** more than two seconds, you can reset the distance, maximum and average speed.
6. Press the **Button 2** to enlighten the LCD backlight.

Bracket Mounting Instruction

1. Wear It Around the Upper Arm.

Mount the bracket on the Navibe Sport GPS receiver (Figure 1). Insert armband to the hole and slide through the bracket (Figure 2). Then fix the Navibe Sport GPS receiver on the upper arm to create an enclosure (Figure 3).



Figure 1



Figure 2



Figure 3

Reference

2. Fix It On The Waist Belt

Mount the bracket on the Navibe Sport GPS receiver (Figure 4). Then use the bracket to fix the Navibe Sport GPS receiver on the waist belt (Figure 5).



Figure 4

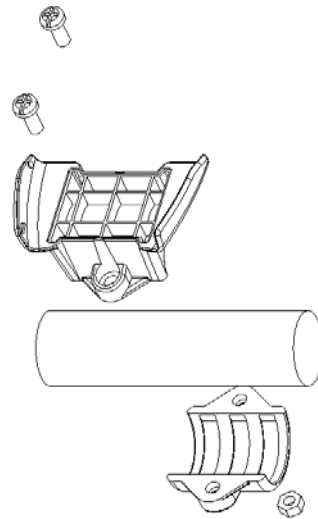


Figure 5

Reference

3. Assemble it on the bike

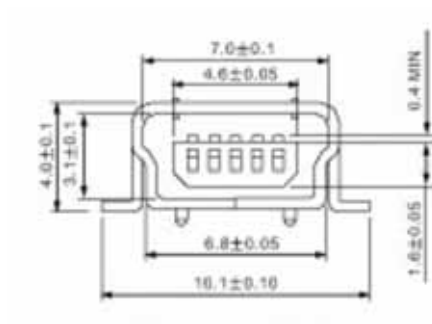
Assemble the Navibe Sport GPS receiver on the bike (see below). Then you are ready to have a biking adventure.



Reference

Pin Assignment

Mini-USB female connector



Pin	Signal Name
1	+5 VDC
2	TX (RS-232) – GPS output (NMEA)
3	TX (TTL) – GPS output (NMEA)
4	N/C
5	Ground

Reference

USB GPS Receiver

After plugged in the USB cable into Navibe Sport GPS receiver, Navibe Sport GPS receiver can be used as a normal USB GPS receiver.



Compass Systems Corp.
Email: service@cpss.com.tw

©Copy right 2005 by Compass Systems Corp. All rights reserved.

April 2005

Printed in Taiwan